



Universal Access to Early Childhood
Care, Education & Health Services
Winter, 2018

The Opportunity



Photo credit: SOMOS Mayfair

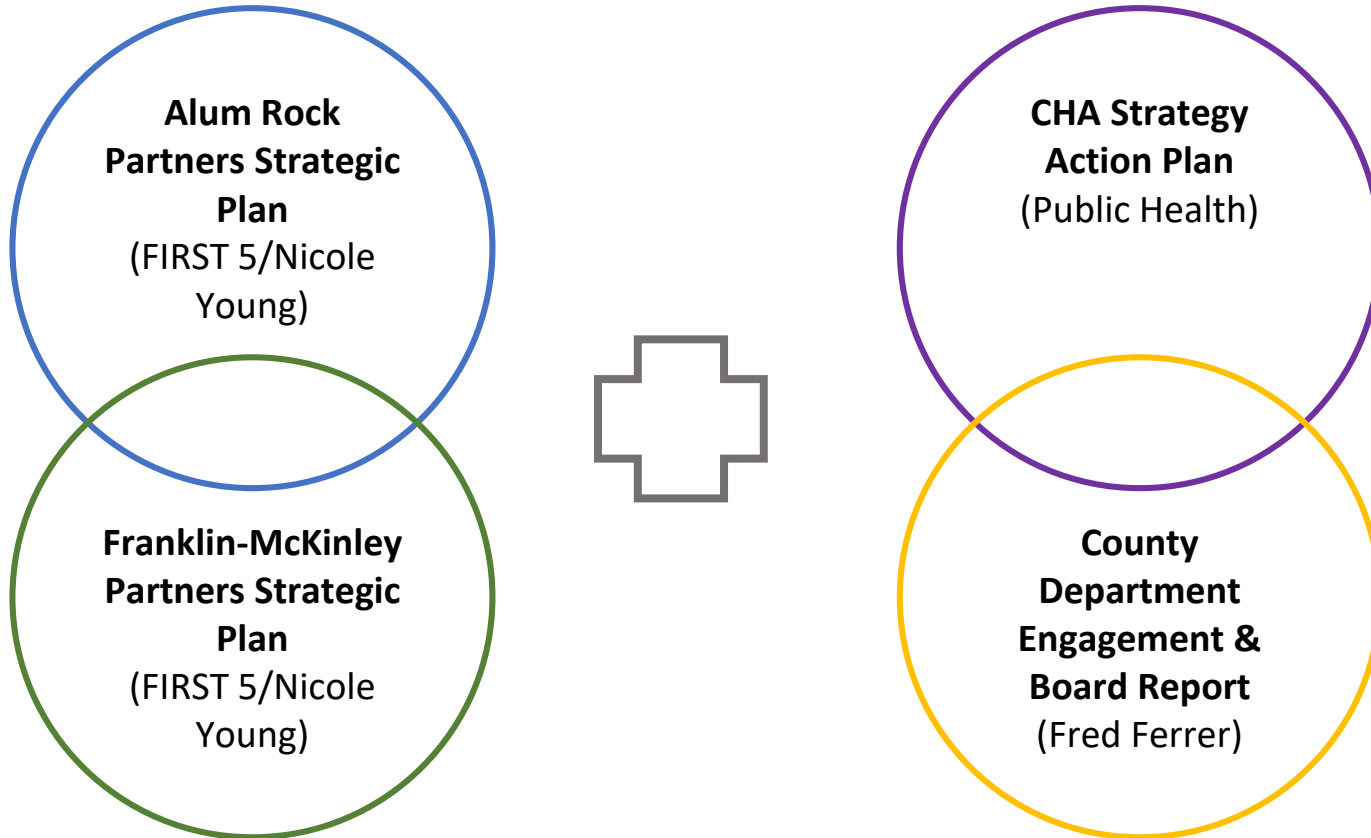
President Cortese:
“strengthen, scale and
develop **new**
investment strategies in
early learning and
development.”

The Opportunity

Supervisor Ken
Yeager:

Report on pilot plan
to create universal
access to **quality
child care,
education, and
health care** from
prenatal – 3rd grade

Coordinated Planning



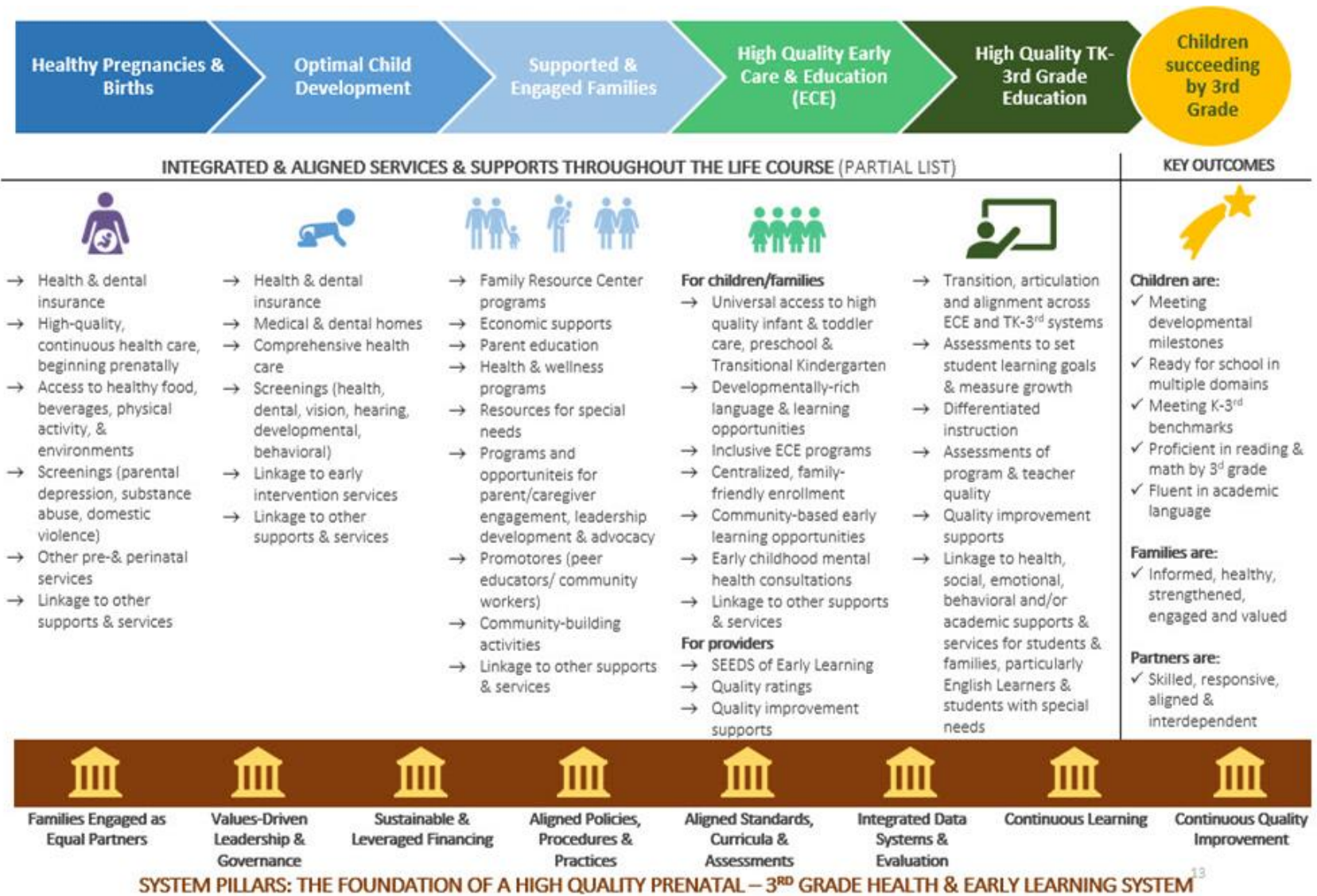
Goals Alignment

- Integrate the County services into the delivery model of the early childhood providers working in conjunction with the two pilot districts
- Pilot universal access in Franklin-McKinley and Alum Rock School Districts
- Develop and modify the systems to achieve service integration and universal access

Progress of Districts

- Developed Prenatal – 3rd Grade Health & Early Learning Strategic Plans
- Developed and agreed to utilize *Pathway to Success* as their framework
- Agreed to use common metrics on the milestone outcomes to evaluate all efforts
- Adopted the Concierge Navigation Model as a service delivery model
- Have demonstrated a strong commitment and willingness to work together to achieve success for all children being ready for school and successful in school by third grade

Prenatal – 3rd Grade Pathway to Success



5 District Strategic Goals

Goal 1

Align and integrate **systems**

Goal 2

Provide equitable, inclusive, affordable and universal access to **high-quality early learning** experiences

Goal 3

Address **social determinants** that impact children's health and learning

Goal 4

Strengthen **Family-School-Community** partnerships

Goal 5

Demonstrate **impact** and achieve **sustainability**

Early Childhood Concierge Navigator Model for Universal Access

1. Family is looking for:

- Child care (infant, toddler, PreK, TK, afterschool)
- Health insurance, health care
- Housing
- Food stamps
- Employment

but doesn't know what they're eligible for or what's available

2. Family meets with Concierge at District Enrollment or a Family Resource Center

- Complete a Universal Intake form to determine options
- Determines available programs

3. Family develops family plan with Navigator at FRC and enrolls or receives Enhanced Referrals

4. Concierge coordinates services with County and partners e.g.

- Behavioral Health
- CalWORKs
- CalFresh
- Child care, TK
- Child Welfare
- Employment
- Health services & insurance
- Housing
- Parenting support
- WIC
- Other services

5. Navigator follows up with family

- Gauge satisfaction with services
- Identify additional desires
- Provide additional linkages and Enhanced Referrals as needed



Ten Recommendations to move toward universal access summary

- Integrate enrollment of all high quality early care, education, health and social services in two pilot school districts
- Blend and leverage funding and fund the Concierge model and expand School Linked Services to include early childhood
- Improve protocols for coordination and communication among service providers (e.g. Health screenings)

Recommendations to move toward universal access

- Study facilities master plan when it is published
- Utilize family support principles to improve family engagement in all systems
- Modify pilots ongoingly as data dictates
- Next step return with work plan for pilots

Questions & Feedback

Link to full report on
Board of Supervisors'
agenda for
Feb 27, 2018 meeting.